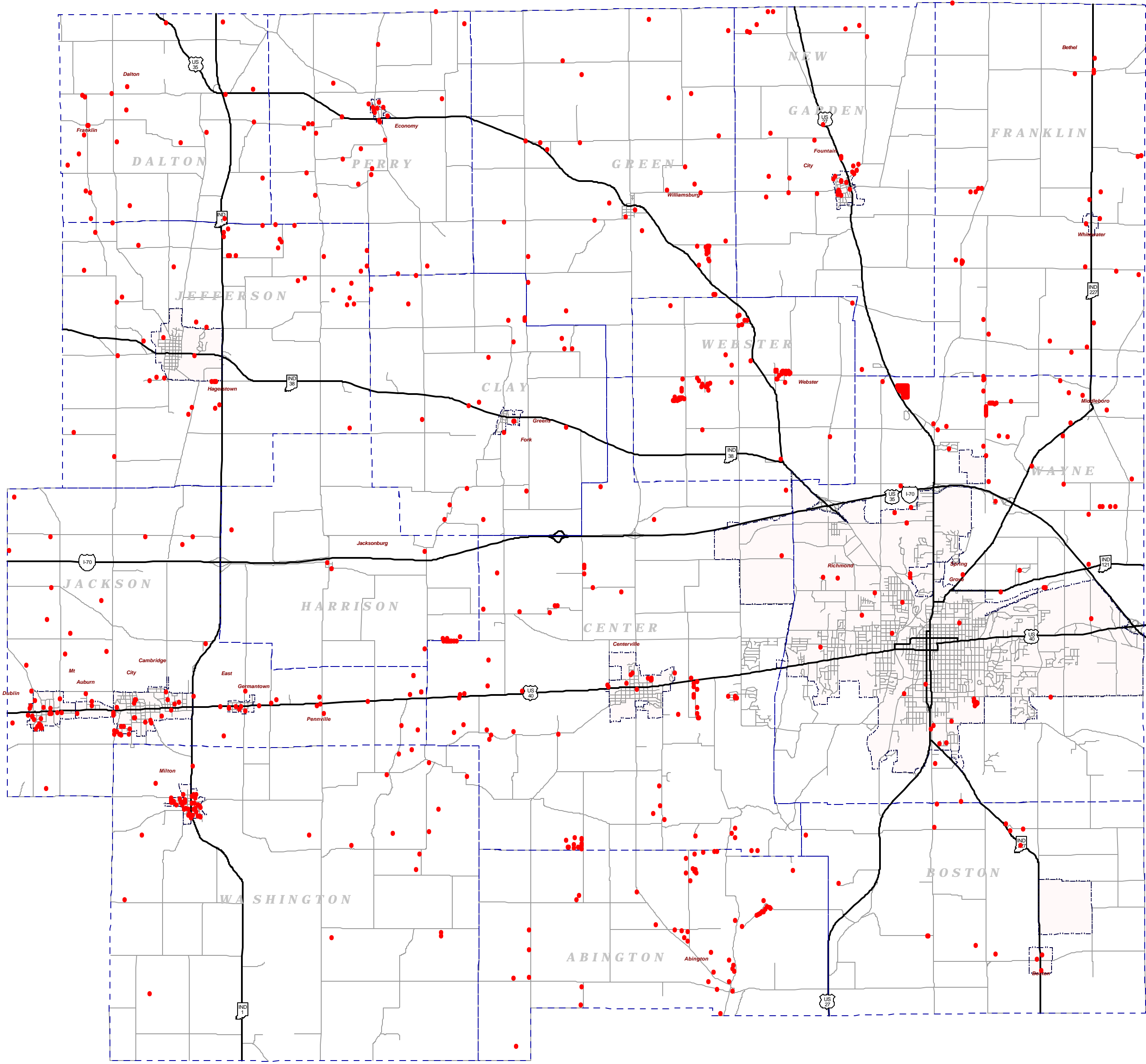
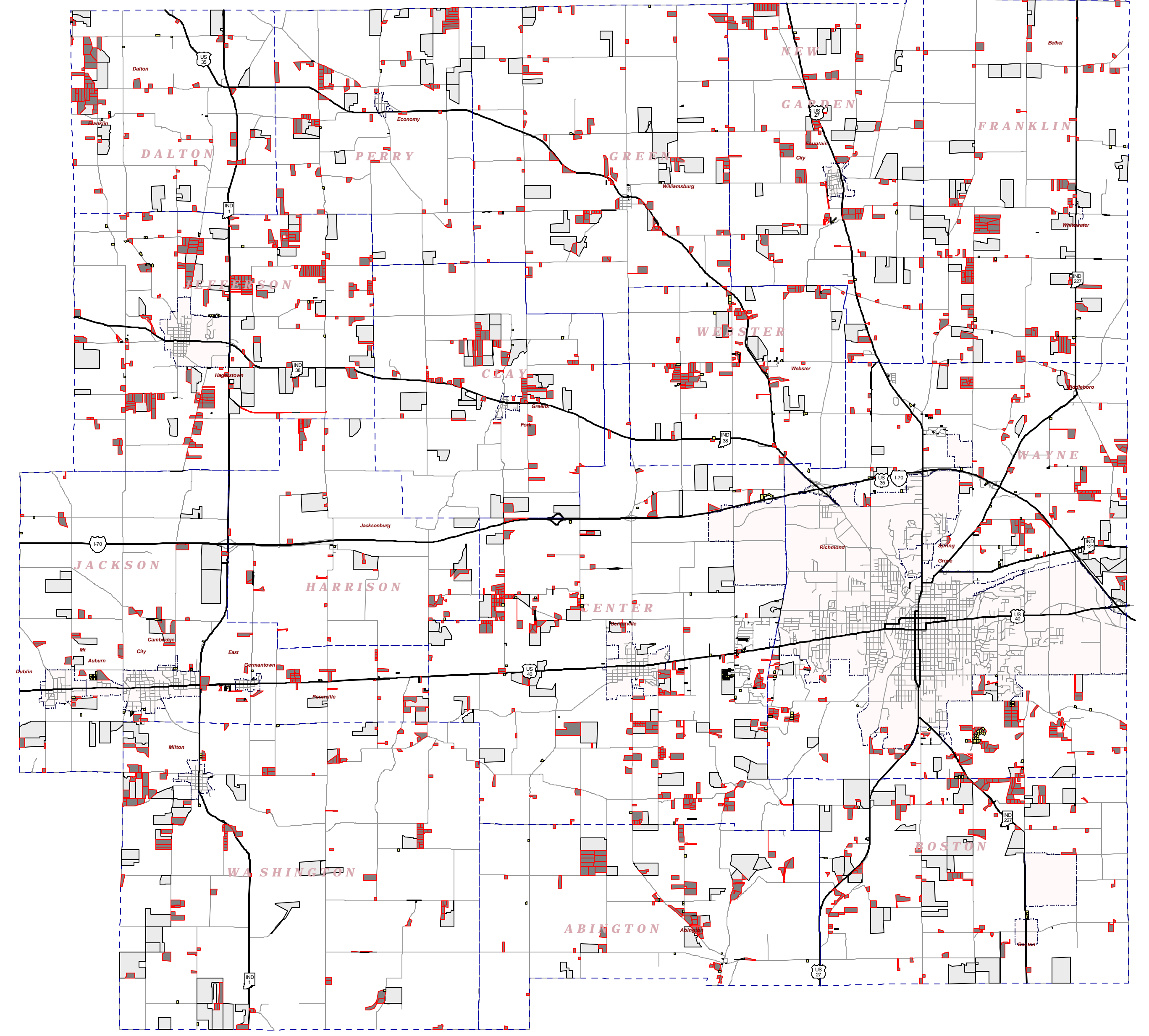


Wayne County Resource Inventory Council, Inc.



Parcels Designated Modular/Mobile Home by The Assessor Office's of Wayne County

● 767 Parcels where the Modular/Mobile Home Owner is the same as the Parcel Owner. Does not include Mobile Home Parks or those who rent the ground their Home sits on.



Splits in the Unincorporated Areas of Wayne County

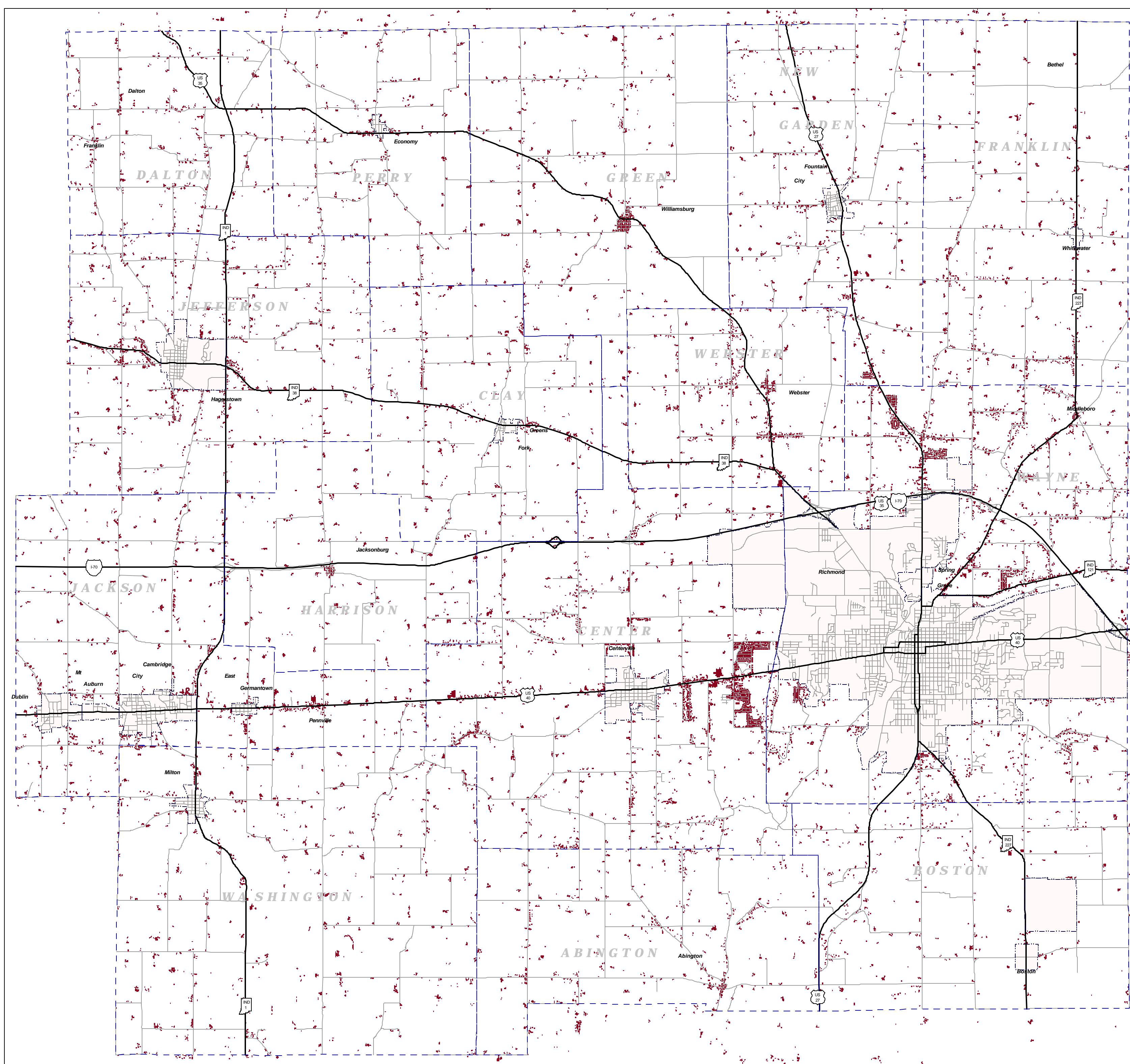
From 1988 to March 1st, 2002

Description	Number of Splits	Total Acreage	Average Lot Size
Parcel Splits > 20 Acres	310	14,626 Acres	47.18 Ac.
Parcel Splits Between 1.5 and 20 Acres	1,595	9190 Acres	5.75 Ac.
Parcel Splits < 1.5 Acres	624	383 Acres	0.61 Ac.
Totals	2529	24,199 Acres	9.57 Ac.

Acreage of Wayne County	258,765 Acres	
Acreage of Incorporated Areas (Including Richmond)	18,832 Acres	
Acreage of Richmond	14,458	
Total Parcels in Wayne Co.	33,600	
Parcels in Incorporated Areas	20,400	61%
Parcels Outside Incorporated Areas	13,200	39%
Parcels Outside Incorporated Areas 1988	10,600 est.	
Percent Increase Parcels Outside Areas from 1988 to March 1st, 2002	24%	

Acreage Source: Wayne County/Richmond GIS Data
Parcel Source: Wayne County Assessor CAMA File, March 1, 2002
Accuracy of Statistics +/- 3%

Indiana Township Census Counts 1890 to 2000												
	1890	1900	1910	1920	1930	1940	1950	1960	1970	1980	1990	2000
Indiana	2,192,404	2,516,462	2,700,876	2,930,390	3,238,503	3,427,796	3,934,224	4,662,498	5,195,392	5,490,224	5,544,159	6,080,483
Wayne County	37,628	38,970	43,757	48,136	54,809	59,229	68,566	74,039	79,109	78,058	71,951	71,097
Abington township	759	864	575	597	572	600	577	653	727	793	865	919
Boston	632	881	774	917	780	770	837	924	1,009	1,029	917	916
Center	2,050	1,929	2,348	1,948	2,218	2,403	2,774	4,711	6,943	7,315	7,345	7,331
Clay	894	973	873	881	833	875	919	1,012	1,076	1,061	1,042	1,023
Dalton	582	522	480	450	391	452	479	513	619	612	580	588
Franklin	1,163	1,121	1,019	959	1,015	1,037	1,065	1,116	1,423	1,450	1,506	1,291
Greene	1,052	804	909	910	966	995	1,095	1,131	1,180	1,326	1,249	1,261
Harrison	503	420	389	357	370	355	332	367	348	333	363	403
Jackson	4,021	3,821	4,243	3,756	4,150	4,226	4,921	5,151	5,518	5,588	4,803	4,626
Jefferson	1,784	1,720	1,818	2,240	2,359	2,798	2,921	3,195	3,501	3,479	3,331	3,427
New Garden	1,264	1,166	1,188	1,079	1,159	1,120	1,221	1,562	1,889	1,924	1,847	1,778
Perry	740	684	691	727	679	704	781	753	775	762	700	763
Washington	1,740	1,608	1,416	1,391	1,410	1,425	1,588	1,488	1,715	1,706	1,539	1,579
Wayne	19,643	22,166	26,509	31,466	37,408	40,926	48,380	50,819	51,104	47,236	44,743	43,742
Webster	601	561	525	478	499	543	576	644	1,292	1,444	1,321	1,453



Structures in Wayne County

1996 GIS Planimetric Data

- County Commissioners**
 Mary C. Heyob Western District
 Thomas A. Dickman Middle District
 John O. Catey Eastern District
- County Highway Engineer**
 Warren James Sudhoff
- County Highway Supervisor**
 Blair Hodowal
- County Surveyor**
 William D. Brown
 RIC Director
 Ed Pollock

Wayne County/Richmond GIS	
Wayne County Surveyor's Office	
Drawn By: G Atkins	Date: Sept 23th, 2002
	 Maps are not to scale