




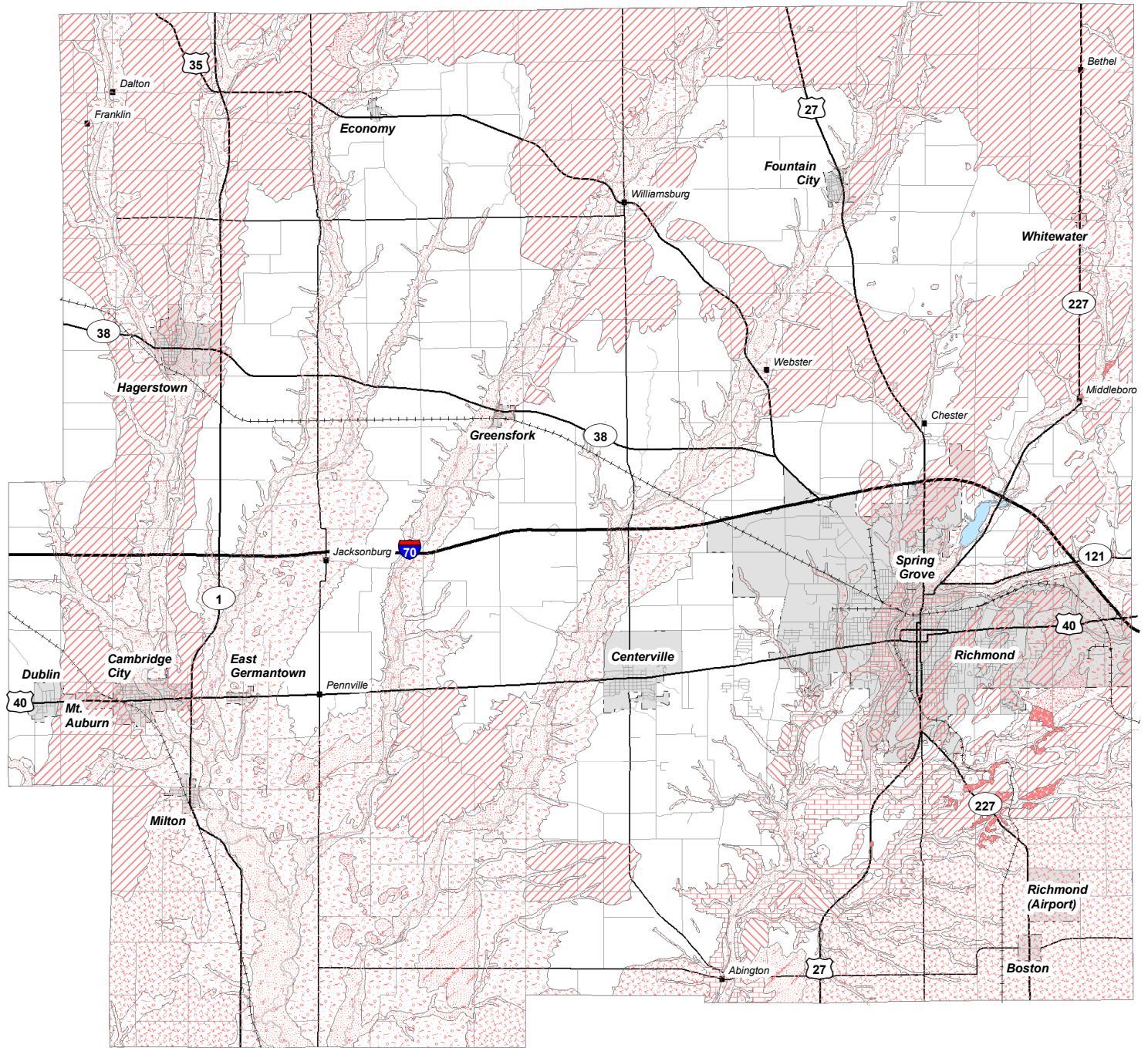


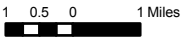
**Geologic Features**

-  Silt, Sand, Gravel
-  Sand, Gravel
-  Glacial Till: Moraine
-  1.5'-4' Silt/Glacial Till: Moraine
-  Glacial Till
-  1.5'-4' Silt/Glacial Till
-  Sand, Gravel, Glacial Till/Bedrock
-  Ordovician Limestone & Shale
-  Muck, Clay, Silt/Gravel
-  Silurian Dolomitic Limestone



Not to Scale

Wayne County/Richmond GIS  
Date: 6-5-2003



# General Geologic Features for Wayne County, Indiana